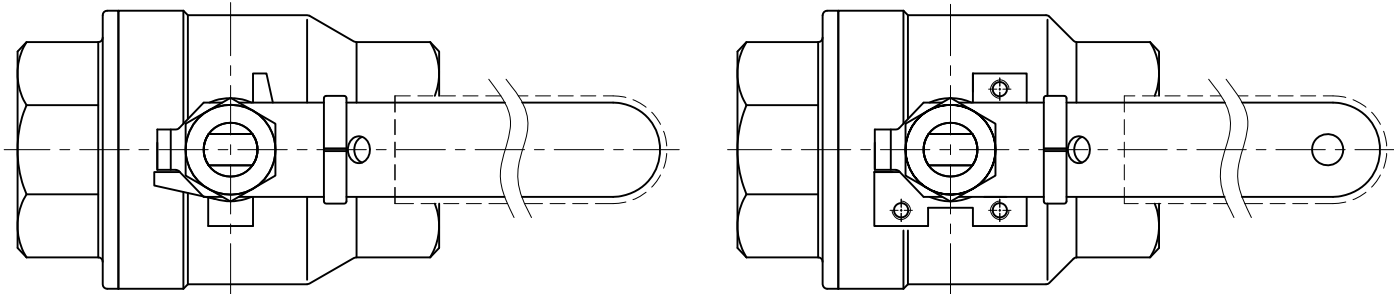


Ra	0.2	▽▽▽
▽	1.6	▽▽
▽	6.3	▽
▽	25	▽
▽	~	▽

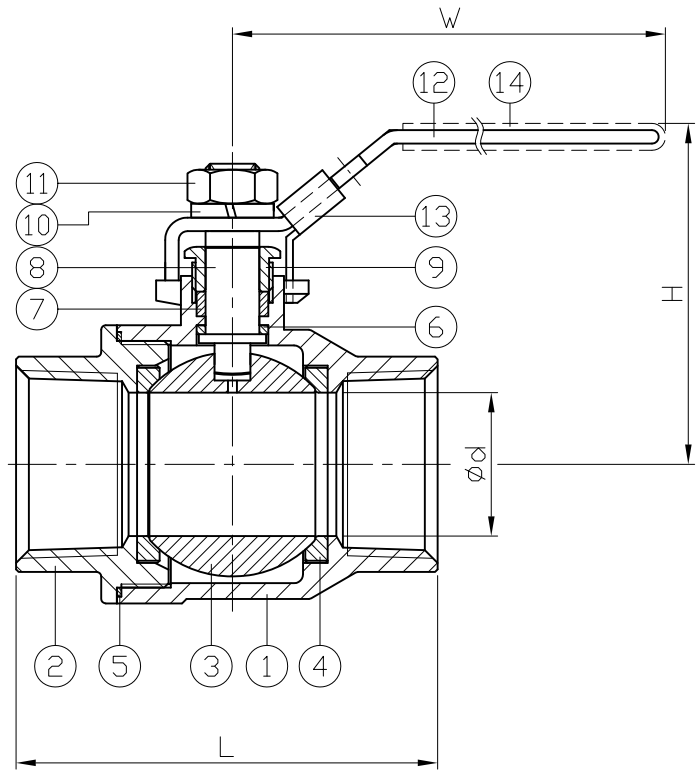
GENERAL TOLERANCE	± 0.1
	± 0.2
	± 0.3
	± 0.5
	± 0.8

HAITIMA CORPORATION  
 P.O. BOX 34-36 TAIPEI  
 Tel:+886-2-26585800  
 E-mail:haitima@seed.net.tw  
 TAIWAN R.O.C. www.haitima.com.tw  
 Fax:+886-2-26582266



1/4"~2"

2-1/2"~3"



DN	d	L	H	W
8	11.6	50.8	58.5	99.5
10	12.5	50.8	58.5	99.5
15	15	60	60.5	99.5
20	20	70	63	123
25	25	82.5	79.5	149
32	32	96.5	86	149
40	38	110	101.7	190
50	50	134	109.3	190
65	65	167	142	247
80	76	192	150	247

unit:mm

NPS	d	L	H	W
1/4"	0.46	2	2.3	3.92
3/8"	0.49	2	2.3	3.92
1/2"	0.59	2.36	2.38	3.92
3/4"	0.79	2.76	2.48	4.84
1"	0.98	3.25	3.13	5.87
1-1/4"	1.26	3.8	3.39	5.87
1-1/2"	1.5	4.33	4	7.48
2"	1.97	5.28	4.3	7.48
2-1/2"	2.56	6.57	5.59	9.72
3"	2.99	7.56	5.91	9.72

unit:in

ITEM	PARTS	MATERIAL
1	BODY	ASTM A351-CF8M
2	CAP	
3	BALL	SS 316
4	SEAT	RTFE
5	SEAL	PTFE
6	THRUST WASHER	
7	PACKING	SS 316
8	STEM	
9	GLAND	AISI 304
10	SPRING WASHER	
11	STEM NUT	
12	HANDLE	
13	LOCKING DEVICE	PVC
14	HANDLE SLEEVE	

△			
△			
△			
Revise	Description	Date	Approve

DRAWING NO. **2006S-A000HF-16**

HAITIMA CORPORATION

CHECK BY	DRAWING BY	DATE	SPECIFICATION	2-PC Screwed End Ball Valve 1000 WOG
	<i>Sammy</i>	May.18.2016	MATERIAL	CF8M
			PROCESS/Nr.	
			UNIT / SCALE	mm