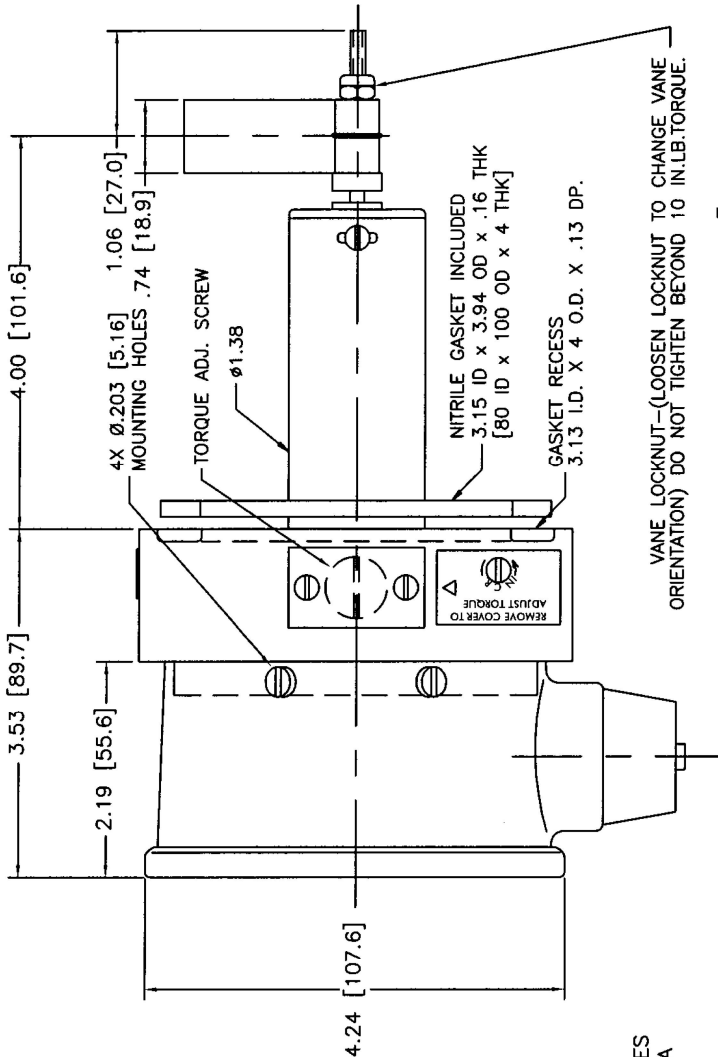
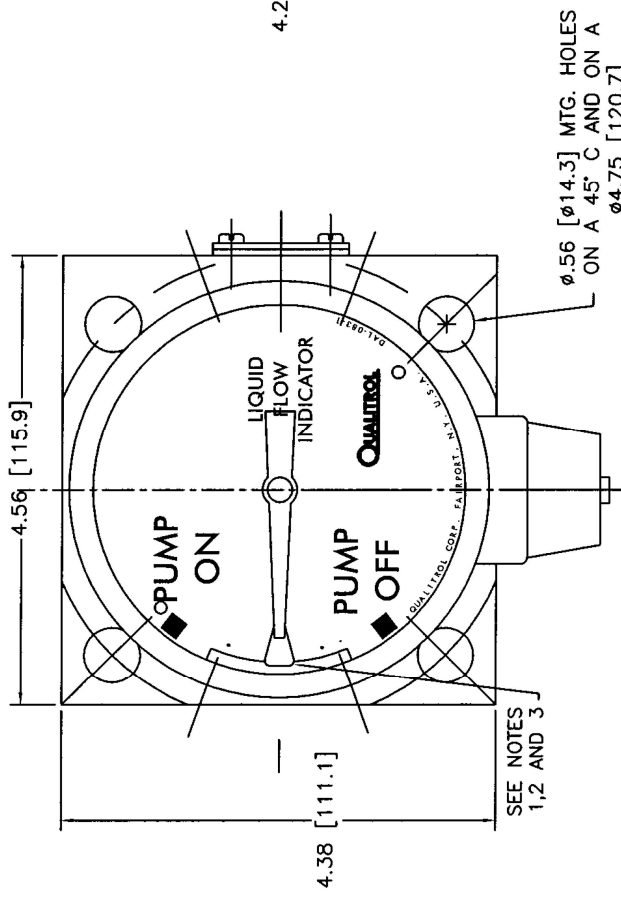


MODEL NO. 092-051-01 CS-36660

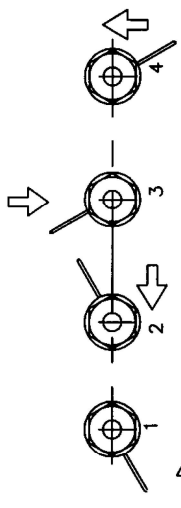
INSULATION TEST: 2000 VOLTS TO GROUND FOR 60 SECONDS

NOTICE
THIS DRAWING IS THE PROPERTY OF Qualitrol Corporation and is loaned only on the condition that it will be used to facilitate the purpose for which intended and not be used for any other purpose. It is to be used as a guide only and is not to be used as a part for purchasing information relative to the marked drawings. All parts apparatus or parts thereof, except by written order from Qualitrol Corporation.

NOTES:
ALL DIMENSIONS ARE IN INCHES [MILLIMETERS], FOR REFERENCE ONLY.
CASE IS INTENDED FOR VERTICAL MOUNTING ONLY.
CASE ASSEMBLY IS SEALED AGAINST DUST AND MOISTURE.
DIAL: BLACK BACKGROUND W/ WHITE CHARACTERS
POINTER: WHITE
LENS: GLASS
CASE: ALUMINUM, PAINTED ASA 70, LIGHT GRAY EPOXY
TORQUE IS ADJUSTABLE BETWEEN 1-5 IN OZ.

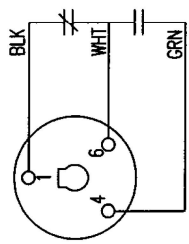


VANE LOCKNUT—(LOOSEN LOCKNUT TO CHANGE VANE ORIENTATION) DO NOT TIGHTEN BEYOND 10 IN.LB.TORQUE.



TYPICAL VANE ORIENTATIONS (VIEWED FROM REAR OF GAUGE) ARROWS INDICATE DIRECTION OF FLOW

WIRING DIAGRAM
(SHOWN AT "PUMP OFF")



SWITCH NOTES

1. INDICATOR LOCATION SHOWS WHERE SWITCH OPERATES ON DECREASING FLOW.
2. INDICATOR ADJUSTMENT - 18° ANGULAR ABOVE CENTERLINE TO 25° ANGULAR BELOW CENTERLINE. FACTORY SET AT HORIZONTAL CENTERLINE.
3. TO ADJUST SWITCH, TURN ADJUSTING SCREW ON BACK OF CASE, CW TO RAISE INDICATOR, CCW TO LOWER.
4. SWITCH OPERATION:
AT "PUMP OFF" CONTACTS 6-4 ARE OPEN AND 1-6 ARE CLOSED. ON INCREASING FLOW, CONTACTS 6-4 WILL CLOSE AND 1-6 WILL OPEN. BETWEEN THE INDICATOR AND "PUMP ON" ON DECREASING FLOW CONTACTS 6-4 WILL OPEN AND 1-6 WILL CLOSE AT THE INDICATOR.

SWITCH RATING:

10 AMPS AT 125, 250, 480 VAC
1/2 AMP AT 125 VDC - NON INDUCTIVE
1/4 AMP AT 250 VDC - NON INDUCTIVE



PH. (585) 586-1515
FAX (585) 377-0220
1385 FAIRPORT ROAD
FAIRPORT, NY 14450
FORM 0-473 REV.D 10/22/02

TITLE: 3.5 FLOW GAGE-1 SW.

MODEL NO. 092-051-01 CS-36660

LET	DATE	ALTERATION	C.N.
-	03-01-06	RELEASED	A