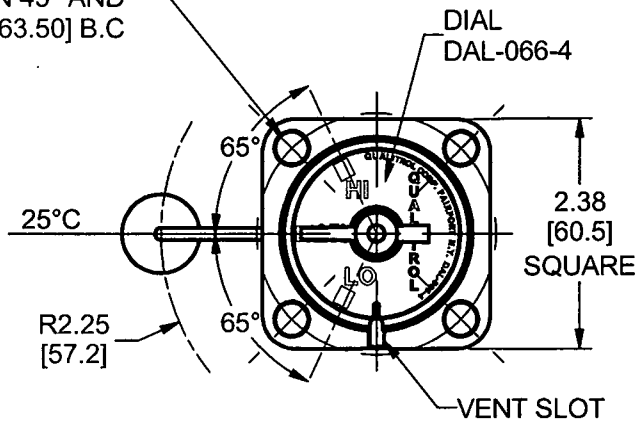


NOTICE
 THIS DRAWING IS THE PROPERTY OF QUALITROL COMPANY LLC AND IS LOANED ONLY ON THE CONDITION THAT IT WILL BE USED TO FACILITATE THE PURPOSE FOR WHICH INTENDED AND NOT BE REPRODUCED, COPIED OR OTHERWISE DISPOSED OF, AND IS NOT TO BE USED IN WHOLE OR PART FOR FURNISHING INFORMATION RELATIVE TO THE MAKING OF DRAWINGS, PARTS APPARATUS OR PARTS THEREOF, EXCEPT BY WRITTEN ORDER FROM QUALITROL COMPANY LLC.

MODEL NO. 020-550

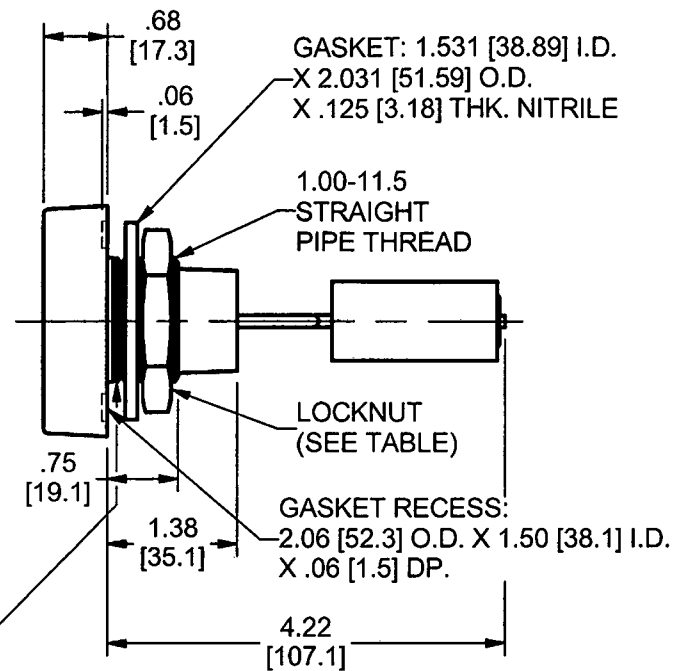
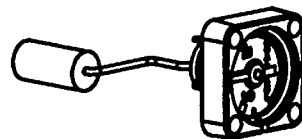
(4) \varnothing .343 HOLES
 [8.71]
 ON 45° AND
 2.500 [63.50] B.C



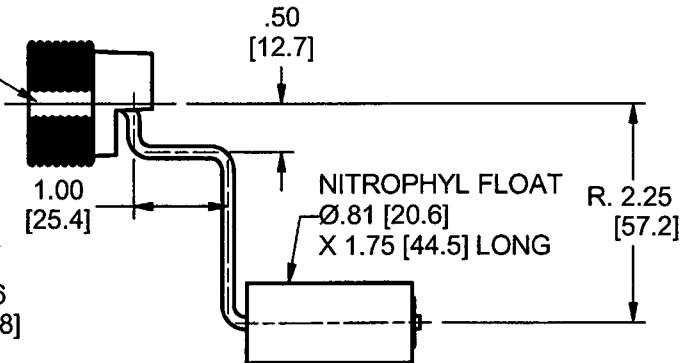
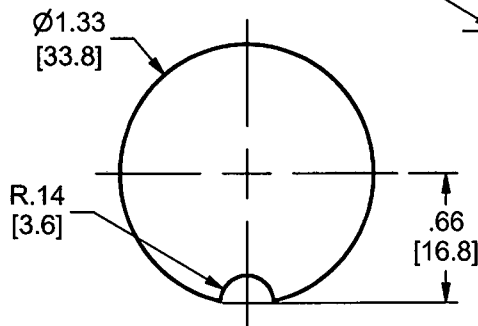
SCALE 1 / 4

SCALE 1 / 2

- NOTES: UNLESS OTHERWISE SPECIFIED**
1. DIMENSIONS ARE IN INCHES [MM] AND ARE FOR REFERENCE ONLY.
 2. GAGE FACE IS FREE BREATHING.
 3. DIAL: WHITE CHARACTER, BLACK BACKGROUND.
 4. POINTER: WHITE.
 5. LENS: POLYCARBONATE.
 6. CASE: ALUMINUM.
 7. FLOAT ROD: BRASS.
 8. ALL ANGULAR DEGREES SHOWN REFLECT FLOAT ROD TRAVEL.
 9. MINIMUM RECOMMENDED TANK WALL THICKNESS: .093 [2.36].
 10. MANUFACTURER REFERENCE ONLY: CONFIG BB.
 11. POINTER LEADS FLOAT ROD BY 0°.
 12. LOCKNUT IS TIGHTENED UNTIL GAGE IS SEATED FLAT TO TANK WALL, APPROXIMATELY 1/2 TURN PAST FINGER TIGHT (160-200 IN-LB ON SUPPLIED LOCKNUT).



VIEW A-A
 SCALE 1 / 2



PART NO.	MOUNTING HARDWARE
020-550-01	GASKET AND LOCKNUT 12
020-550-02	GASKET ONLY

LET	DATE	ALTERATION	C.N.
-	11-3-09	NOTE 12: ASSY TORQUE 160-200 WAS 110-113	27598
-	2-12-07	RELEASED	26108

QUALITROL
 COMPANY LLC

DIMENSIONS AND TOLERANCES IN ACCORDANCE WITH ASME Y14.5M-1994

PH. (585) 586-1515
 FAX (585) 377-0220
 1385 FAIRPORT ROAD
 FAIRPORT, NY 14450
 FORM 0-473 REV.E 11/10/05

TITLE: 2" [50.8 MM] LEVEL GAGE
MODEL NO. 020-550