

## Three-phase Input Filter

### 3-Line EMI Filter, Series A

#### Construction:

- 3-phase, 3-wire filter
- Metal case
- Various terminal connection configurations

#### Features:

- High insertion loss
- Excellent EMI noise suppression
- Optimized for long motor cable and operation under full load
- Guaranteed compliance with EN 55011/IEC 61800-3
- Design complies with IEC 60939, UL 1283, CSA 22.2 No.8

#### Inverters and Frequency Converters Applications:

- Elevators, cranes, traction system
- HVAC systems (heating, ventilation and air conditioning)
- General three phase motor drive systems
- Machine tools: printing machine, packaging machine, milling and drilling machine,
- Textile machine
- Three-phase power supplies and UPS

#### Technical Data

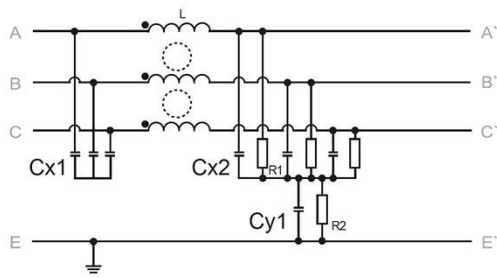
Rated voltage (VR)	440VAC, 50/60Hz
Rated current (IR)	5 ~ 1200A @ 40 °C
Test voltage (VP)	2250VDC, 5S (Line to line) 2550VDC, 5S (Line to case)
Temperature range (operation and storage)	-25 °C ... +85 °C (25_085_21 IEC 60068 – 1)
Overload capability (thermal)	1.5 x IR 3min/hour 2.5 x IR 30s/hour

Filter Type	Rated current @40°C [A]	Drive Power (kW)	Leakage current @ 400VAC/50Hz [mA]	Rtyp (mΩ)	Picture	Weight (kg)
NFI-0005-SA	5	0.75 ~ 1.5	< 6	18	A	0.8
NFI-0010-SA	10	2.2 ~ 4	< 6	7	B	1.5
NFI-0020-SA	20	5.5 ~ 7.5	< 6	7.4	C	2.8
NFI-0036-SA	36	11 ~ 15	< 6	3.7	C	3
NFI-0050-SA	50	18.5 ~ 22	< 6	2.1	C	3.1
NFI-0065-SA	65	30	< 10	1.9	D	5
NFI-0080-SA	80	37	< 10	2.3	E	7.2
NFI-0100-SA	100	45	< 10	2.1	E	7
NFI-0150-SA	150	55 ~ 75	< 10	1.9	E	7.7
NFI-0200-SA	200	90	< 30	0.4	F	5.5
NFI-0250-BA	250	110 ~ 132	< 30	0.22	G	6.9
NFI-0300-BA	300	160	< 30	0.21	G	6.9
NFI-0400-BA	400	200	< 30	0.1	H	12
NFI-0600-BA	600	215 ~ 315	< 30	0.13	H	12.4
NFI-0900-BA	900	400	< 30	0.19	I	21.5
NFI-1200-BA	1200	630	< 30	0.12	I	21.7

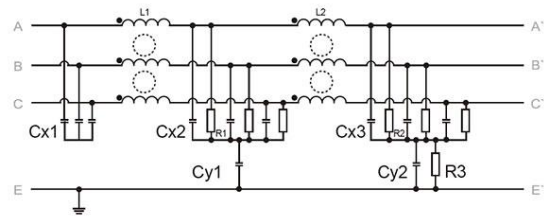
Note: If the leakage current of the filter is greater than 0.5mA, the product should not be used unless there is reliable grounding connection and protective measures. Otherwise, the risk of electric shock exists.

## Three-phase Input Filter

### Electrical Diagram

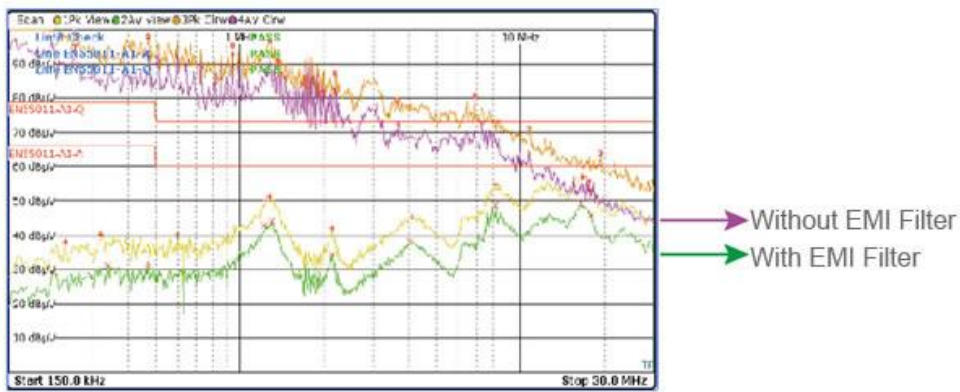


**NFI-0005-SA ... NFI-0036-SA**



**NFI-0050-SA ... NFI-1200-BA**

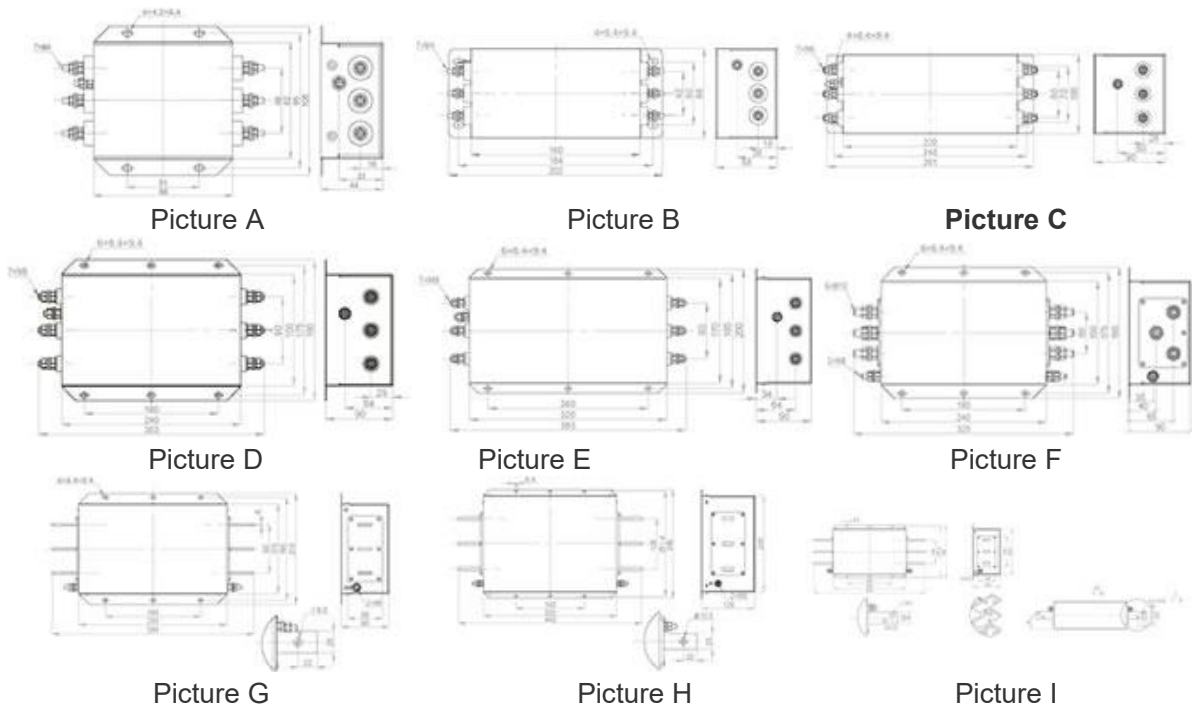
### Conducted emission measurement:



Hz (MHz)	0.15	0.5	1	5	10	30
Input side noise level without EMI Filters(AV/dBμV)	92	84	80	66	61	44
Input side noise level with EMI Filters(AV/dBμV)	20	25	34	32	40	36
Noise damping factor due to EMI Filter application	3981-fold	891-fold	199-fold	50-fold	11-fold	2.5-fold

## Three-phase Input Filter

### Product Size:



### Insertion Loss (typical values at $Z=50\Omega$ )

