

NOTICE
 THIS DRAWING IS THE PROPERTY OF QUALITROL COMPANY LLC AND IS LOANED ONLY ON THE CONDITION THAT IT WILL BE USED TO FACILITATE THE PURPOSE FOR WHICH INTENDED AND NOT BE REPRODUCED, COPIED OR OTHERWISE DISPOSED OF, AND IS NOT TO BE USED IN WHOLE OR PART FOR FURNISHING INFORMATION RELATIVE TO THE MAKING OF DRAWINGS, PARTS APPARATUS OR PARTS THEREOF, EXCEPT BY WRITTEN ORDER FROM QUALITROL COMPANY LLC.

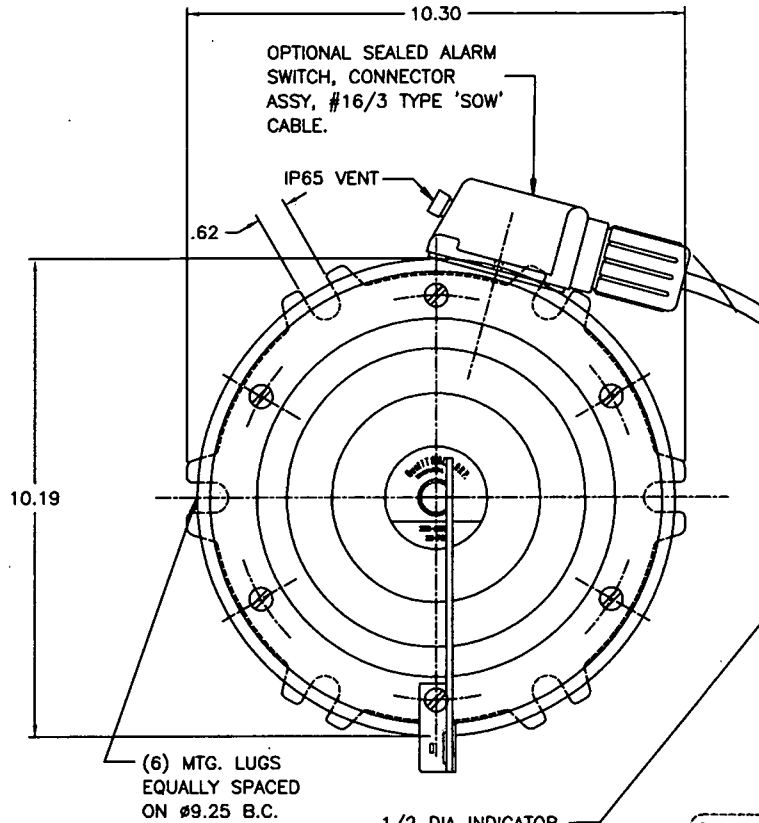
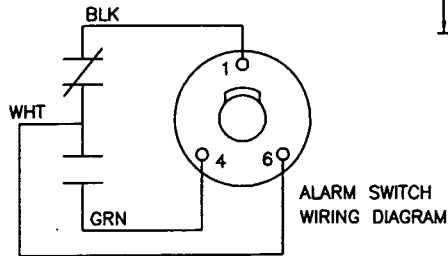
MODEL NO.

208-60

NOTES:

1. BLACK AND WHITE ARE NORMALLY CLOSED WHEN ALARM SWITCH IS MOUNTED AND ARMED AS SHOWN.
2. WHEN DEVICE OPERATES: BLACK AND WHITE ARE OPEN GREEN AND WHITE ARE CLOSED
3. WHEN THE SWITCH RESET LEVER IS MAN. DEPRESSED: BLACK AND WHITE ARE CLOSED GREEN AND WHITE ARE OPEN
4. FINISH: ASA #70 LT GRAY EPOXY

SWITCH RATINGS:
 ENEC/CQC: 11(3) A, 125/250 VAC
 UL/cUL: 11(3) A, 125/250 VAC
 UL FILE#: E12252

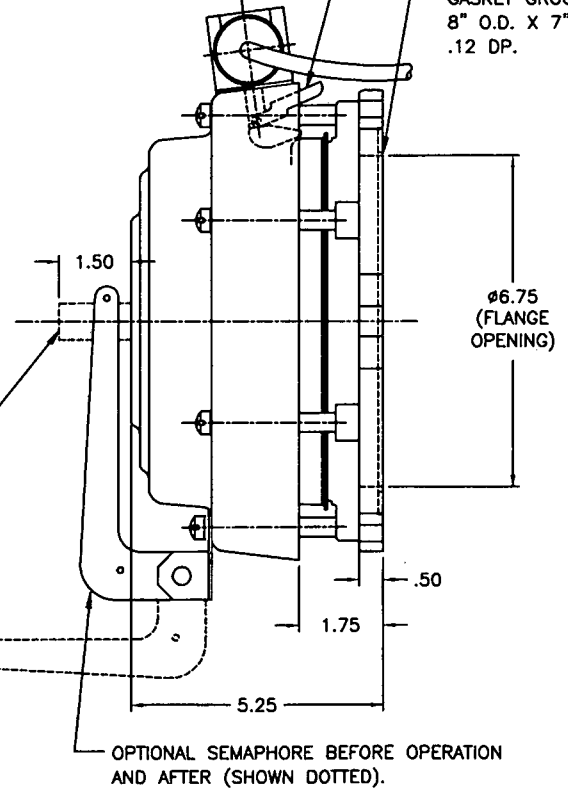


OPTIONAL SEALED ALARM SWITCH, CONNECTOR ASSY, #16/3 TYPE 'SOW' CABLE.

IP65 VENT

SWITCH RESET LEVER AFTER OPERATION. PUSH INWARD TO RESET.

GASKET GROOVE 8" O.D. X 7" I.D. .12 DP.



SHEET 1 OF 3

LET	DATE	ALTERATION	C.N.
-	7-9-13	ADDED IP65 VENT TO ALARM SWITCH	31508
-	5-30-12	UPDATED SWITCH DESIGN	30164

QUALITROL®

DIMENSIONS AND TOLERANCES IN ACCORDANCE WITH ASME Y14.5M-1994

PH. (585) 586-1515
 FAX (585) 377-0220

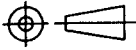
1385 FAIRPORT ROAD
 FAIRPORT, NY 14450

FORM 0-473 REV. F 04/06/06

TITLE: PRESSURE RELIEF DEVICE

MODEL NO.

208-60



NOTICE

THIS DRAWING IS THE PROPERTY OF QUALITROL COMPANY LLC AND IS LOANED ONLY ON THE CONDITION THAT IT WILL BE USED TO FACILITATE THE PURPOSE FOR WHICH INTENDED AND NOT BE REPRODUCED, COPIED OR OTHERWISE DISPOSED OF, AND IS NOT TO BE USED IN WHOLE OR PART FOR FURNISHING INFORMATION RELATIVE TO THE MAKING OF DRAWINGS, PARTS APPARATUS OR PARTS THEREOF, EXCEPT BY WRITTEN ORDER FROM QUALITROL COMPANY LLC.

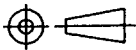
MODEL
NO.

208-60

DATE ADDED	MODEL NO.	GASKET MAT'L	X-FORM. LIQUID	OPERATE. PRESS.	ALARM SWITCH	CABLE LG'TH	INDICATOR COLOR	REMARKS
OBSOLETE 16633 3-16-95	208-60A	NITRILE	OIL	4 PSIG			YELLOW	LABEL REQ'D.
OBSOLETE 16633 3-16-95	B	NITRILE	OIL	8			YELLOW	LABEL REQ'D.
OBSOLETE 16633 3-16-95	C	NITRILE	OIL	10			YELLOW	LABEL REQ'D.
24381; 4-6-04	E	NITRILE	OIL	10±1			YELLOW	
31508 7-9-13	F	NITRILE	OIL	10±1	YES	48.00	YELLOW	
31508 7-9-13	G	SILCN	ASKAREL	10±1	YES	48.00	RED	
24381; 4-6-04	H	SILCN	ASKAREL	10±1			RED	
24381; 4-6-04	L	SILCN	ASKAREL	8±1			RED	
24381; 4-6-04	N	NITRILE	OIL	5±1			YELLOW	
31508 7-9-13	P	NITRILE	OIL	5±1	YES	48.00	YELLOW	
31508 7-9-13	Q	SILCN	ASKAREL	5±1	YES	48.00	RED	
24381; 4-6-04	R	SILCN	ASKAREL	5±1			RED	
24381; 4-6-04	S	NITRILE	OIL	12±1			YELLOW	
24381; 4-6-04	U	NITRILE	OIL	8±1			YELLOW	
31508 7-9-13	V	SILCN	ASKAREL	8±1	YES	48.00	RED	
31508 7-9-13	W	NITRILE	OIL	8±1	YES	48.00	YELLOW	SEMAPHORE
31508 7-9-13	Y	NITRILE	OIL	12±1	YES	48.00	YELLOW	
31508 7-9-13	Z	NITRILE	OIL	8±1	YES	48.00	YELLOW	

SHEET 2 OF 3

<h1>QUALITROL®</h1> <p>DIMENSIONS AND TOLERANCES IN ACCORDANCE WITH ASME Y14.5M-1994</p>	PH. (585) 586-1515 FAX (585) 377-0220 1385 FAIRPORT ROAD FAIRPORT, NY 14450 FORM 0-473 REV. F 04/06/06	TITLE: PRESSURE RELIEF DEVICE
	MODEL NO. 208-60	



NOTICE

THIS DRAWING IS THE PROPERTY OF QUALITROL COMPANY LLC AND IS LOANED ONLY ON THE CONDITION THAT IT WILL BE USED TO FACILITATE THE PURPOSE FOR WHICH INTENDED AND NOT BE REPRODUCED, COPIED OR OTHERWISE DISPOSED OF, AND IS NOT TO BE USED IN WHOLE OR PART FOR FURNISHING INFORMATION RELATIVE TO THE MAKING OF DRAWINGS, PARTS APPARATUS OR PARTS THEREOF, EXCEPT BY WRITTEN ORDER FROM QUALITROL COMPANY LLC.

MODEL
NO.

208-60

DATE ADDED	MODEL NO.	GASKET MAT'L	X-FORM. LIQUID	OPERATE. PRESS.	ALARM SWITCH	CABLE LG'TH	INDICATOR COLOR	REMARKS
31508 7-9-13	208-60AA	BUNA-N	OIL	8±1 PSIG	YES		YELLOW	CABLE FITT'S. ONLY
	N/I	AB	SILCN	PYROCLR	12	48.00	RED	
		AC	NITRILE	OIL	12		YELLOW	
		AD	NITRILE	OIL	10		YELLOW	
	N/I	AE	NITRILE	OIL	8		YELLOW	
	N/I	AF	NITRILE	OIL	5		YELLOW	
24381; 4-6-04		AG	NITRILE	OIL	4±1		YELLOW	
		AH	NITRILE	OIL	5	48.00	YELLOW	GASKET
24381; 4-6-04		AJ	NITRILE	OIL	7±1		YELLOW	
	N/I	AK	NITRILE	OIL	5		YELLOW	CABLE FITT'S. ONLY
	N/I	AL	SILCN	ASKAREL	12			NO INDICATOR
	N/I	AM	NITRILE	OIL	12		YELLOW	
	N/I	AN	NITRILE	OIL	8		YELLOW	
	N/I	AP	NITRILE	OIL	10		YELLOW	
	N/I	AR	NITRILE	OIL	10		YELLOW	ALRM SW W/GND.TERM.
	N/I	AS	NITRILE	OIL	5		YELLOW	ALRM SW W/GND.TERM.
31508 7-9-13		FN	NITRILE	OIL	10±1	48.00	YELLOW	SWITCH MTG. NUTS
31508 7-9-13		YN	NITRILE	OIL	12±1	48.00	YELLOW	SWITCH MTG. NUTS
31508 7-9-13		ZN	NITRILE	OIL	8±1	48.00	YELLOW	SWITCH MTG. NUTS

SHEET 3 OF 3

QUALITROL®

DIMENSIONS AND TOLERANCES IN ACCORDANCE WITH ASME Y14.5M-1994

PH. (585) 586-1515
FAX (585) 377-0220

1385 FAIRPORT ROAD
FAIRPORT, NY 14450

FORM 0-473 REV. F 04/06/06

TITLE:
PRESSURE RELIEF DEVICE

MODEL
NO.

208-60