

CONTROL COMPONENT

KH-516 Series



CLASSIFICATION

KH- 516L- A 1 2- R (12)

① ② ③ ④ ⑤ ⑥

① SHAPE	A: SQUARE
	B: RECTANGLE
	C: ROUND
	D: EMERGENCY STOP
② FUNCTION	0: PILOT LAMP
	1: ILLUMINATE PUSHBUTTON SWITCH (MOMENTARY)
	2: ILLUMINATED PUSHBUTTON SWITCH(MAINTAINED)
	3: PUSHBUTTON SWITCH (MOMENTARY)
③ CONTACTS	4: PUSHBUTTON SWITCH (MAINTAINED)
	0: NO CONTACTS(PILOT LAMP)
	1: 1C (1A1B)
④ COLOR	2: 2C (2A2B)
	R: RED
	G:GREEN
	Y: YELLOW
	O: ORANGE
	W: WHITE
	B: BLUE
⑤ INPUT VOLTAGE	6: 6V
	12:12V
	24: 24V

CONTROL COMPONENTS

MICRO SWITCH

FOOT SWITCH

LIMIT SWITCH

POWER SWITCH

HOIST SWITCH

CAM SWITCH

CONTROL COMPONENT

PILOT LAMPS

KH- 516- C00
KH- 516L- C00



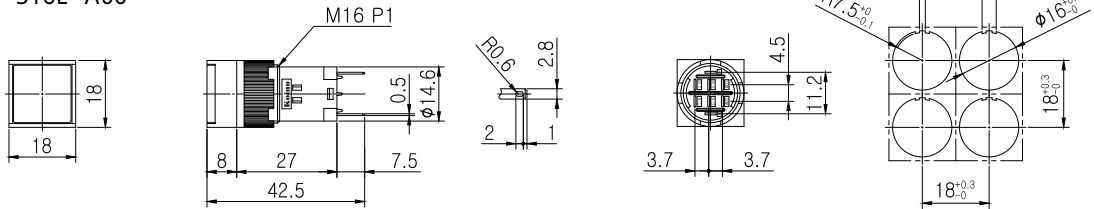
KH- 516- A00
KH- 516L- A00



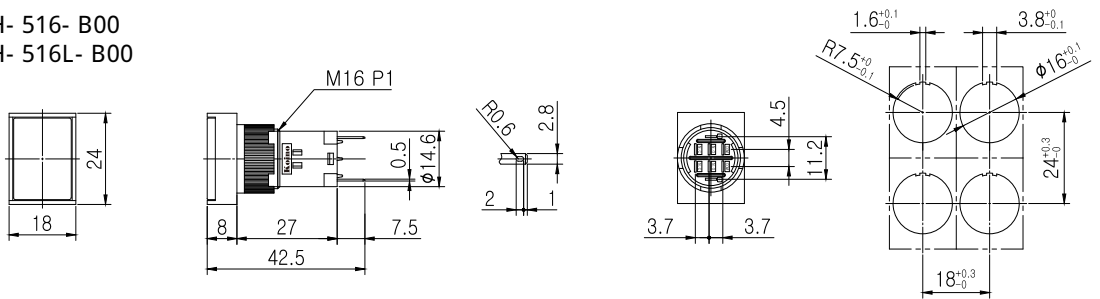
KH- 516- B00
KH- 516L- B00



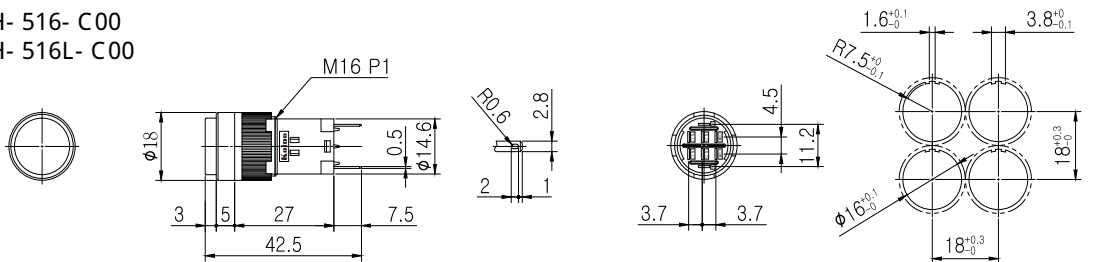
KH- 516- A00
KH- 516L- A00



KH- 516- B00
KH- 516L- B00



KH- 516- C00
KH- 516L- C00



CONTROL COMPONENT

ILLUMINATED PUSHBUTTON SWITCH(MOMENTARY)

KH- 516- C11,12
KH- 516L- C11,12



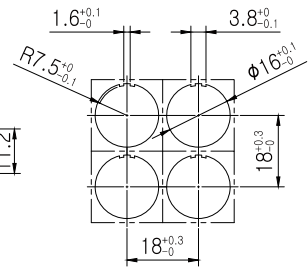
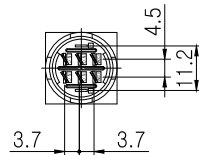
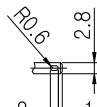
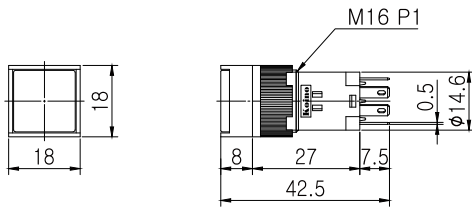
KH- 516- A11,12
KH- 516L- A11,12



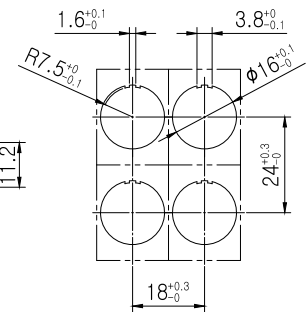
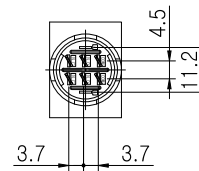
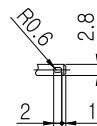
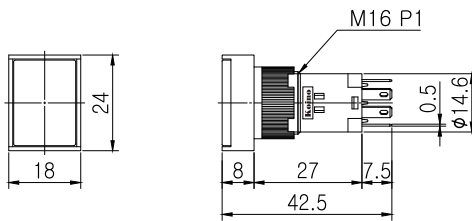
KH- 516- B11,12
KH- 516L- B11,12



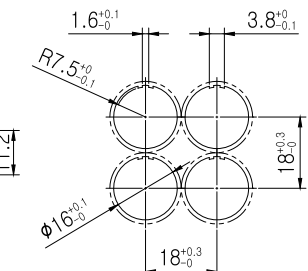
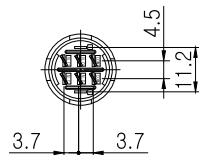
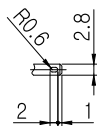
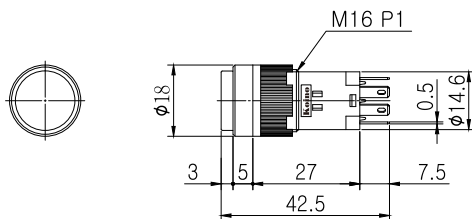
KH- 516- A11(1c),A12(2c)
KH- 516L- A11(1c),A12(2c)



KH- 516- B11(1c),B12(2c)
KH- 516L- B11(1c),B12(2c)



KH- 516- C11(1c),C12(2c)
KH- 516L- C11(1c),C12(2c)



CONTROL COMPONENTS

MICRO SWITCH

FOOT SWITCH

LIMIT SWITCH

POWER SWITCH

HOIST SWITCH

CAM SWITCH

CONTROL COMPONENT

ILLUMINATED PUSHBUTTON SWITCH(MAINTAINED)

KH- 516- C21,22
KH- 516L- C21,22



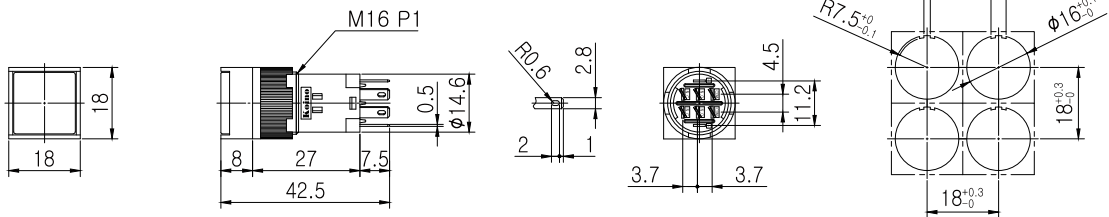
KH- 516- A21,22
KH- 516L- A21,22



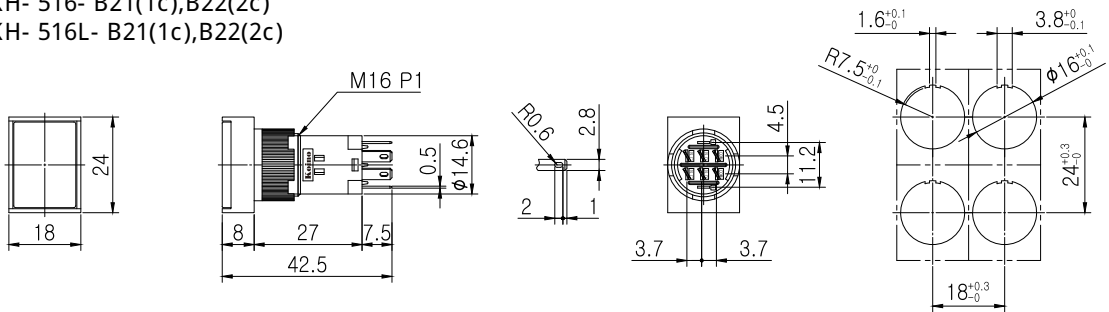
KH- 516- B21,22
KH- 516L- B21,22



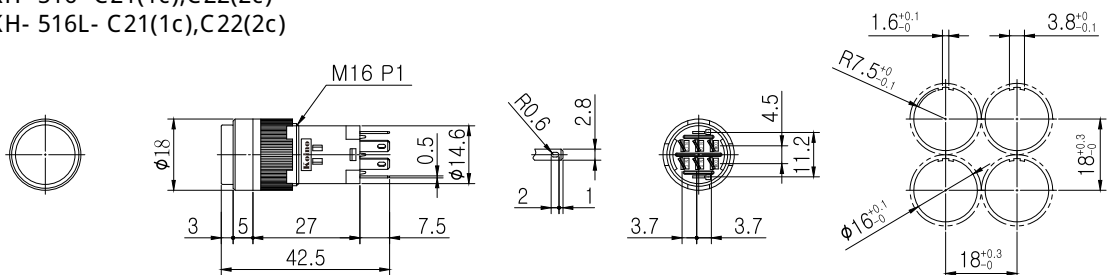
KH- 516- A21(1c),A22(2c)
KH- 516L- A21(1c),A22(2c)



KH- 516- B21(1c),B22(2c)
KH- 516L- B21(1c),B22(2c)



KH- 516- C21(1c),C22(2c)
KH- 516L- C21(1c),C22(2c)



CONTROL COMPONENT

PUSHBUTTON SWITCH(MAINTAINED)

KH- 516- C41,42



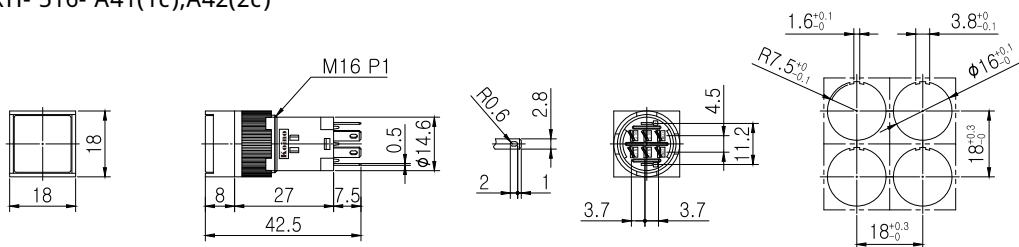
KH- 516- A41,42



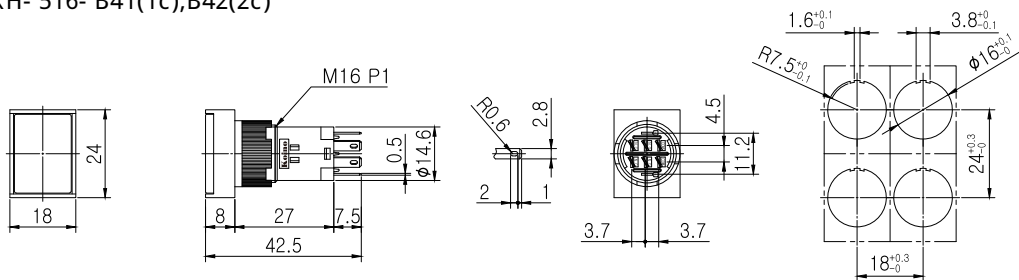
KH- 516- B41,42



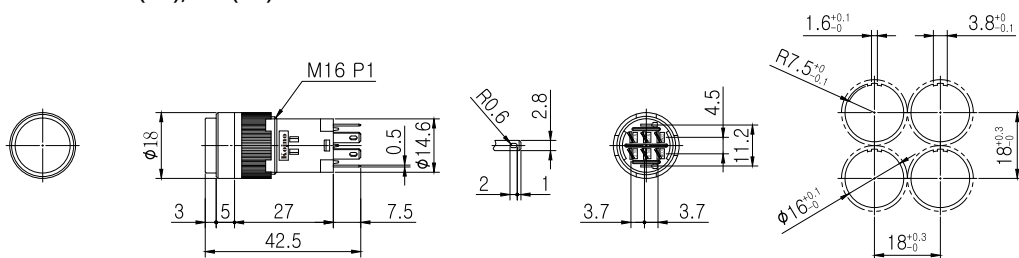
KH- 516- A41(1c),A42(2c)



KH- 516- B41(1c),B42(2c)



KH- 516- C41(1c),C42(2c)



CONTROL COMPONENT

PUSHBUTTON SWITCH(MUSHROOM HEAD TYPE)

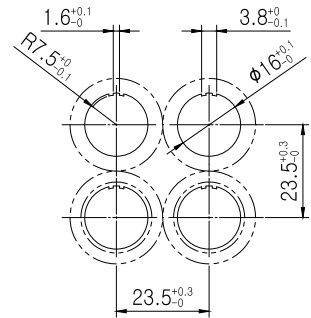
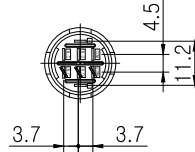
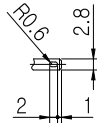
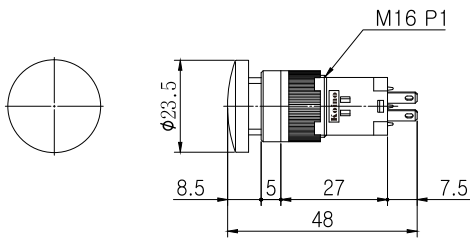
KH- 516- D31,32
MOMENTARY



KH- 516- D41,42
MAINTAINED



KH- 516- D31,32 KH- 516- D41,42

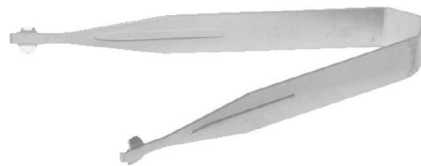


ACCESSORIES

KA- 16
SAFETY COVER FOR KH- 516



LAMP REMOVAL TOOL
FOR KH- 516



ANTI- ROTATION RING



CONTROL COMPONENTS

MICRO SWITCH

FOOT SWITCH

LIMIT SWITCH

POWER SWITCH

HOIST SWITCH

CAM SWITCH

CONTROL COMPONENT

Specification

Switching System	The switching element of KH- 516 is equipped with normally open contact and normally closed contact.1C and 2C contact available.					
Material	Contact	Silver alloy + Copper	Housing	Nylon galss	Buttons	PC
Mechanical Lifetime	Momentary type: 500,000 Cycles of operation Maintained type: 200,000 Cycles of operation					
Install	Tightening torque : Max. 6Kg/F.Cm					
Standards	This product comply with “ Standards for low- voltage switching devices” EN IEC 60947- 5- 1					
Contact Ratings	250VAC 1A (resistive load)					
Insulation Resistance	Minimum 100MΩ (500VDC)					
Contact Resistance	Maximum 30mΩ					
Electrical Lifetime	70,000 cycles of operation					
Dielectric Strength	Between Live Parts: 1,000VAC(50/60Hz) for 1 minute Between Live and Dead Parts: 1,000VAC(50/60Hz) for 1 minute					
Lamp Ratings	FILAMENT LAMP: 6V(60mA), 12V(40mA), 24V(24mA) LED LAMP: DC 6V(40mA), DC 12V(20mA), DC 24V(20mA)					
Operational Temperature	- 15°C □+50°C					
Operational Humidity	45 □85%RH					
Protection Degree	IP40					
Shock Resistance	Approximately 100G(1,000m/s ²)					
Vibration Resistance	10 □55Hz double amplitude 1.5mm (at X, Y and Z axis)					
Approbations	KC					
Declaration of Conformity	None					