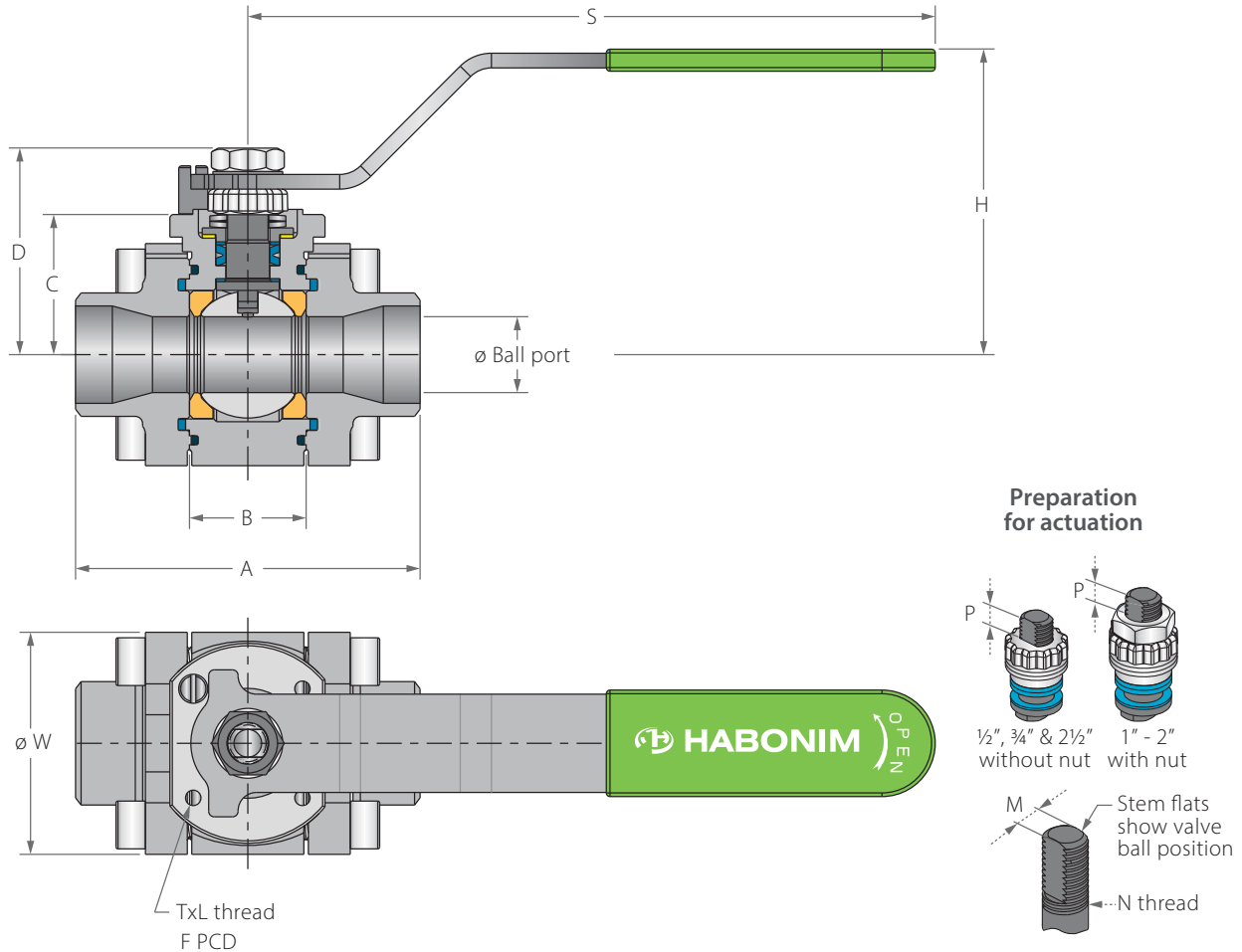


## Floating Ball 3 Piece

### Valve Dimensions



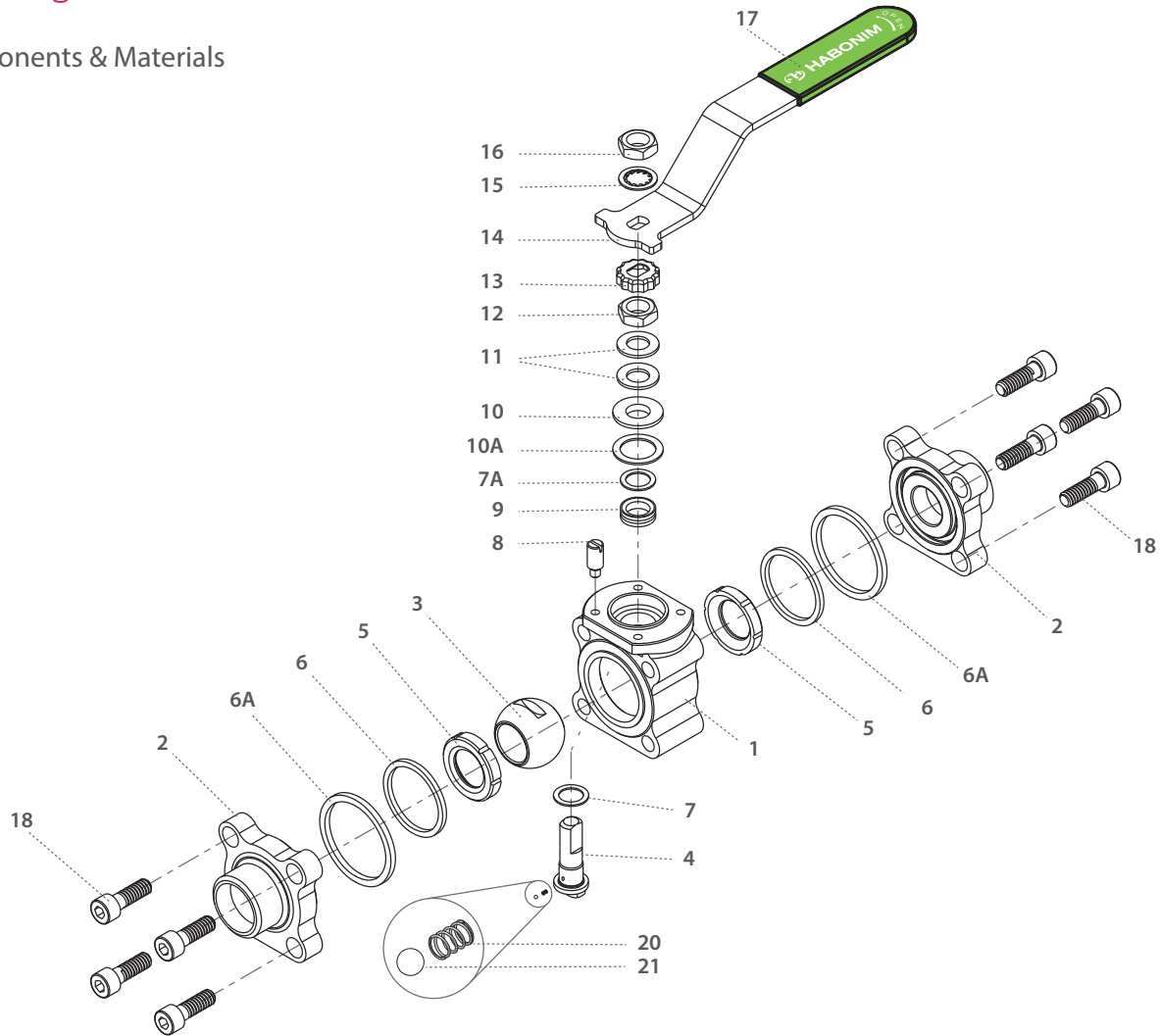
Valve Face To Face sizes are according to Habonim catalog data only, for Extended-weld/Flanged/Tri-clamp end see Face To Face sizes page.

Std. port	Full port	Unit	Ball port	A	B	C	D	H	S	W	M	N	P	F	TxL	Weight kg/lb	Kv Cv	
	DN8	mm	11.15	66.0	20.60	29.0	37.90	61.50	150.0	47.0	5.54	3/8 UNF	6.65	F03	36.0	M5X10	0.60	2.6
	1/4"	inch	0.44	2.60	0.81	1.14	1.49	2.42	5.91	1.85	0.22		0.26		1.42	M5X10	1.33	3.0
DN15	DN10	mm	11.15	66.0	20.60	29.0	37.90	61.50	150.0	47.0	5.54	3/8 UNF	6.65	F03	36.0	M5X10	0.60	6.9
1/2"	3/8"	inch	0.44	2.60	0.81	1.14	1.49	2.42	5.91	1.85	0.22		0.26		1.42		M5X10	1.33
DN20	DN15	mm	14.30	70.60	24.50	31.40	40.30	63.90	150.0	53.70	5.54	3/8 UNF	6.65	F03	36.0	M5X10	0.80	10
3/4"	1/2"	inch	0.56	2.78	0.97	1.24	1.59	2.52	5.91	2.11	0.22		0.26		1.42		M5X10	1.77
DN25	DN20	mm	20.60	93.70	31.70	38.10	55.60	79.40	187.0	63.70	7.54	7/16 UNF	7.40	F04	42.0	M5X10	1.60	28
1"	3/4"	inch	0.81	3.69	1.25	1.50	2.19	3.13	7.36	2.51	0.30		0.29		1.65		M5X10	3.54
DN32	DN25	mm	25.40	108.0	41.30	42.70	60.20	84.10	187.0	71.70	7.54	7/16 UNF	7.40	F04	42.0	M5X10	2.50	49
1 1/4"	1"	inch	1.0	4.25	1.62	1.68	2.37	3.31	7.36	2.82	0.30		0.29		1.65		M5X10	5.53
DN40	DN32	mm	31.80	115.50	48.40	43.60	73.0	97.0	237.0	86.70	8.71	3/8 UNF	8.50	F05	50.0	M6X12	3.60	69
1 1/2"	1 1/4"	inch	1.25	4.55	1.91	1.72	2.87	3.82	9.33	3.41	0.34		0.33		1.97		M6X12	7.96
DN50	DN40	mm	38.10	128.0	56.30	48.30	77.80	101.80	237.0	96.90	8.71	3/8 UNF	8.50	F05	50.0	M6X12	4.50	102
2"	1 1/2"	inch	1.50	5.04	2.22	1.90	3.06	4.01	9.33	3.82	0.34		0.33		1.97		M6X12	9.95



## Floating Ball 3 Piece

### Components & Materials



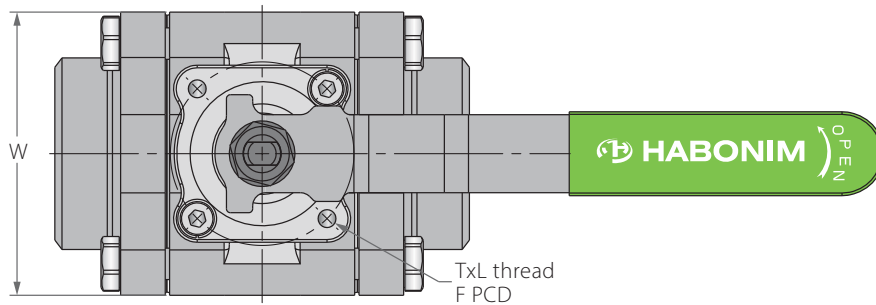
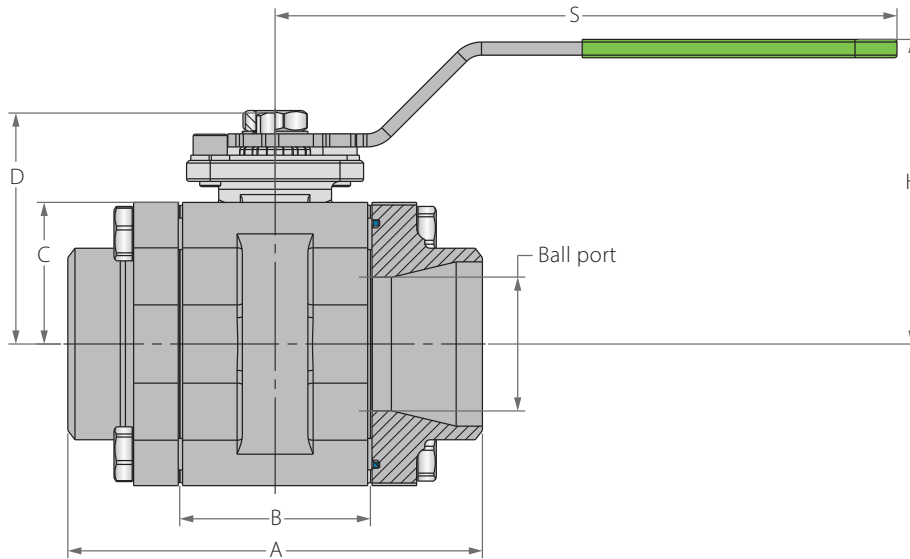
Item	Description	Material specification	Qty.
1	Body	Acc. Ordering Code	1
2	Ends	Acc. Ordering Code	2
3	Ball	Acc. Ordering Code	1
4	Stem	Acc. Ordering Code	1
5*	Seat	Acc. Ordering Code	2
6*	Inner Seal	PTFE	2
6A*	Outer Seal	Acc. Ordering Code	2
7*	Stem Thrust Seal	VIRGIN PEEK, PCTFE	1
7A*	Anti-Abrasion Ring	VIRGIN PEEK, PCTFE	1
8	Stop Pin	S. Steel	1
9*	Stem Seal	CF PTFE, TFM	1
10	Follower	S. Steel	1

Item	Description	Material specification	Qty.
10A*	Slide Bearing	S. Steel	1
11	Disc Spring	S. Steel	2
12	Stem Nut	S. Steel	1
13	Locking Clip	S. Steel	1
14	Handle	S. Steel	1
15	Serrated Washer	S. Steel	1
16	Handle Nut	S. Steel	1
17	Sleeve	PVC	1
18	Body Bolt	S. Steel	8
20	Anti-Static Spring	S. Steel	1
21	Anti-Static Plunger	S. Steel	1
23	Tag (not shown)	A167S. Steel304	1

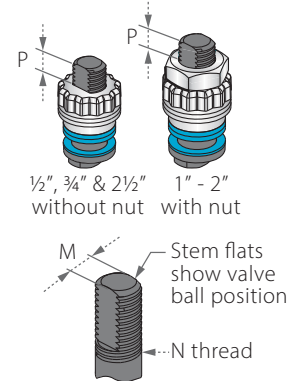
\* Maintenance kit components

## Floating Ball 3 Piece

### Valve Dimensions



#### Preparation for actuation



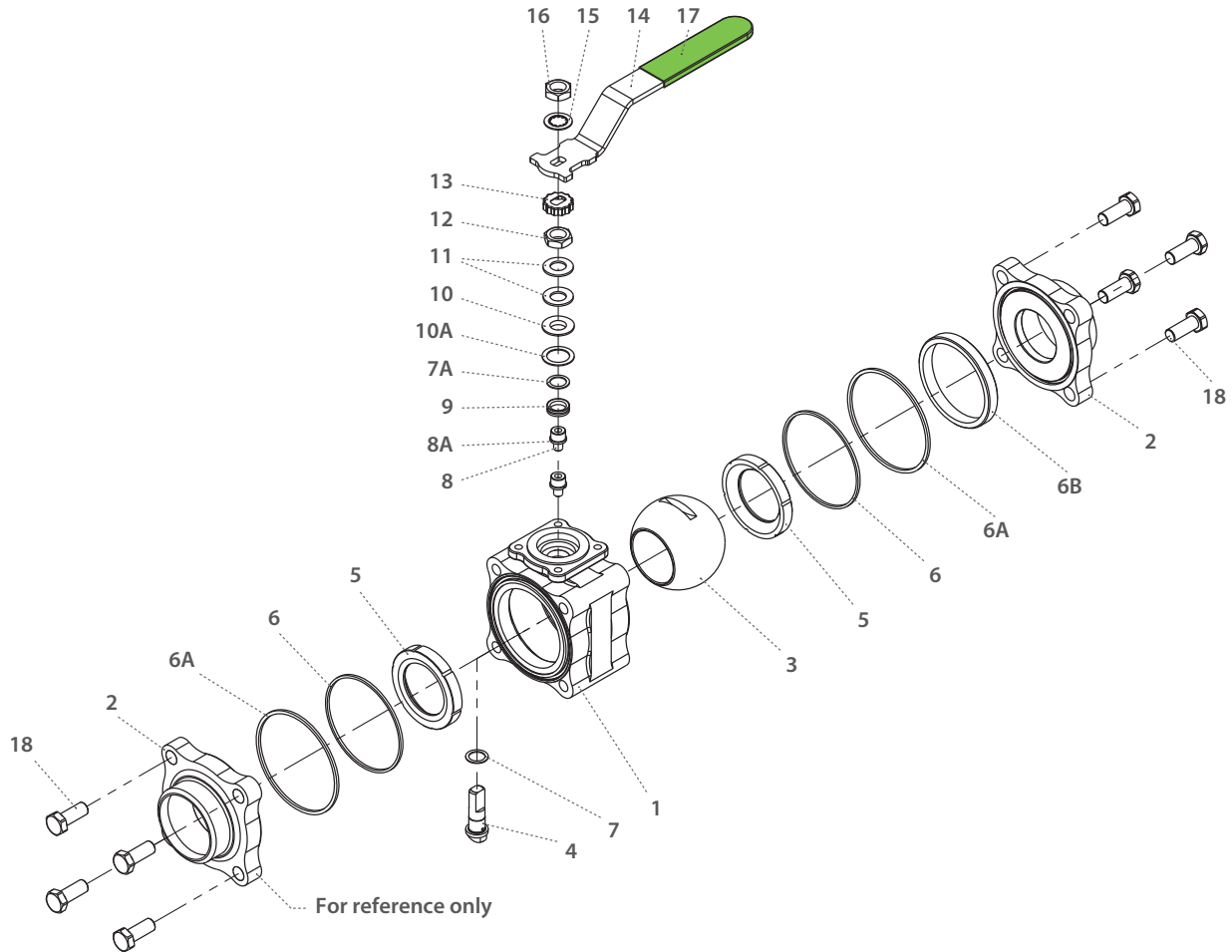
Valve Face To Face sizes are according to Habonim catalog data only, for Extended-weld/Flanged/Tri-clamp end see Face To Face sizes page.

Std. port	Full port	Unit	Ball port	A	B	C	D	H	S	W	M	N	P	F	TxL	Weight kg/lb	Kv Cv
DN65	DN50	mm	50.80	158.0	72.60	70.0	88.10	115.10	237.0	108.0	8.71	⅝ UNF	13.50	F07	70.0	M8X12	9.50 208
2½"	2"	inch	2.0	6.22	2.86	2.76	3.47	4.53	9.33	4.25	0.34	⅝ UNF	0.53	F07	2.76	M8X12	21.00 241



# Floating Ball 3 Piece

## Components & Materials



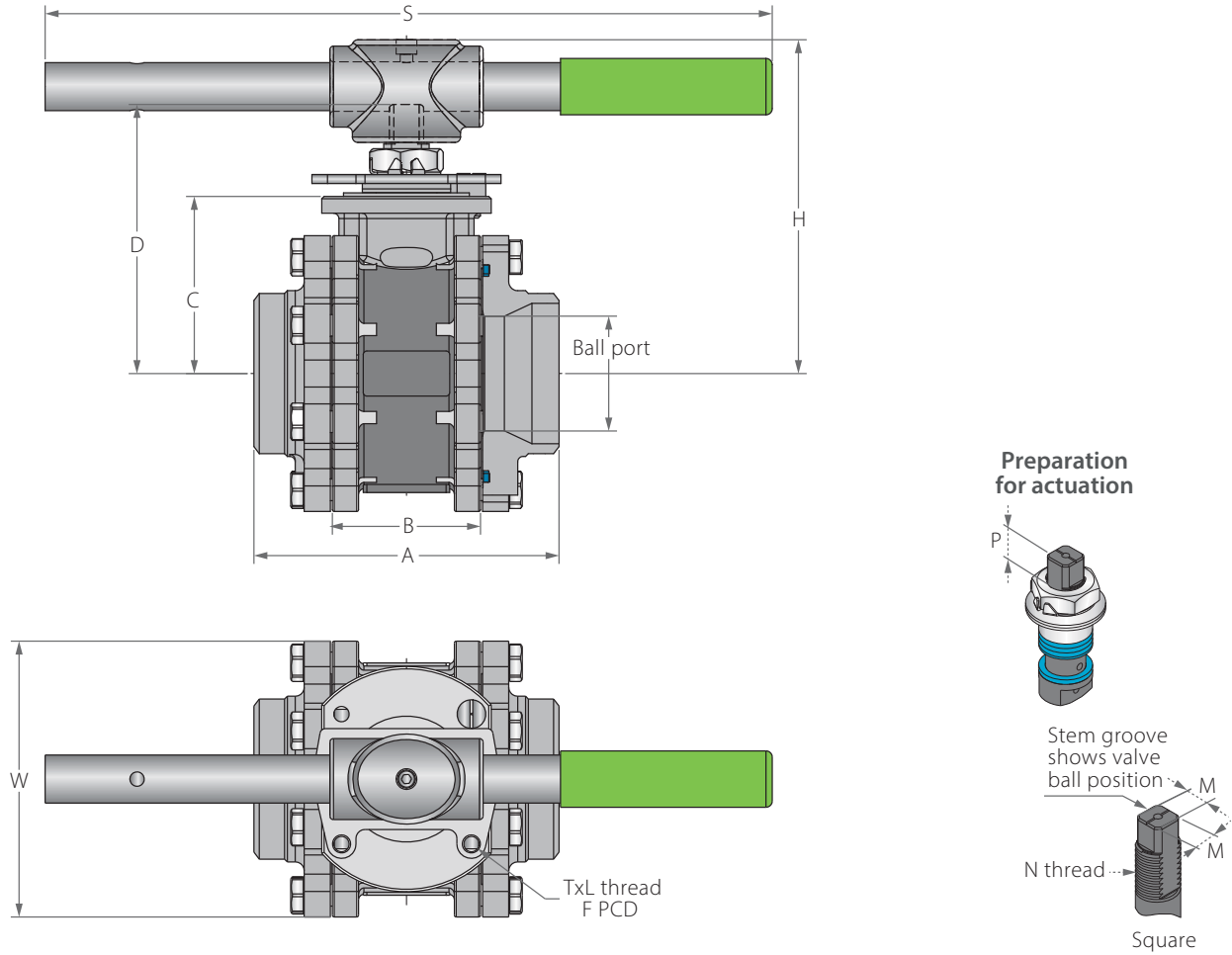
Item	Description	Material specification	Qty.
1	Body	Acc. Ordering Code	1
2	Ends	Acc. Ordering Code	2
3	Ball	Acc. Ordering Code	1
4	Stem	Acc. Ordering Code	1
5*	Seat	Acc. Ordering Code	2
6*	Inner Seal	PTFE	2
6A*	Outer Seal	Acc. Ordering Code	2
7*	Stem Thrust Seal	VIRGIN PEEK, PCTFE	1
7A*	Anti-Abrasion Ring	VIRGIN PEEK, PCTFE	1
8	Stop Pin	S. Steel	1
9*	Stem Seal	CF PTFE, TFM	1
10	Follower	S. Steel	1

Item	Description	Material specification	Qty.
10A*	Slide Bearing	S. Steel	1
11	Disc Spring	S. Steel	2
12	Stem Nut	S. Steel	1
13	Locking Clip	S. Steel	1
14	Handle	S. Steel	1
15	Serrated Washer	S. Steel	1
16	Handle Nut	S. Steel	1
17	Sleeve	PVC	1
18	Body Bolt	S. Steel	8
20	Anti-Static Spring	S. Steel	1
21	Anti-Static Plunger	S. Steel	1
23	Tag (not shown)	A167S. Steel304	1

\* Maintenance kit components

## Floating Ball 3 Piece

### Valve Dimensions



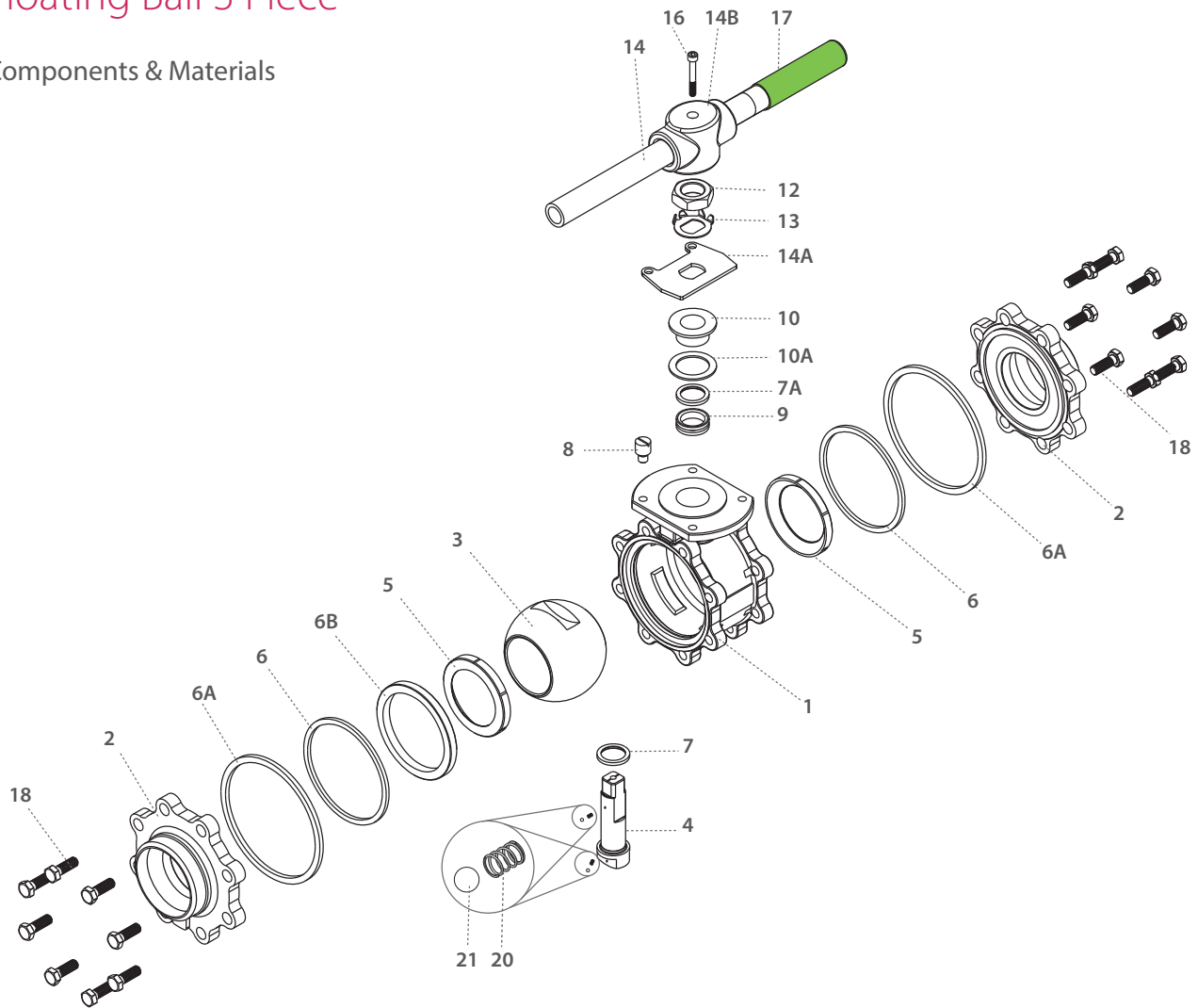
Valve Face To Face sizes are according to Habonim catalog data only, for Extended-weld/Flanged/Tri-clamp end see Face To Face sizes page.

Std. port	Full port	Unit	Ball port	A	B	C	D	H	S	W	M	M-DD	N	P	F	TxL	Weight kg/lb	Kv Cv	
DN80	DN65	mm	63.50	169.0	83.30	98.30	144.90	185.0	400.0	140.0	18.90	15.90	1"-14	16.70	F10	102.0	M10x20	13.70	300
3"	2½"	inch	2.50	6.65	3.28	3.87	5.71	7.29	15.75	5.50	0.74	0.63	UNS-2A	0.66	F10	4.02	M10x20	30.30	348
DN100	DN80	mm	82.60	214.0	108.80	114.10	160.70	200.0	600.0	177.0	18.90	15.90	1"-14	16.70	F10	102.0	M10x20	23.70	615
4"	3"	inch	3.25	8.43	4.28	4.49	6.33	7.89	23.62	6.97	0.74	0.63	UNS-2A	0.66	F10	4.02	M10x20	52.40	713
	DN100	mm	100.0	239.0	123.0	124.0	170.50	211.0	600.0	217.0	18.90	15.90	1"-14	16.70	F10	102.0	M10x20	30.00	744
	4"	inch	3.94	9.41	4.84	4.88	6.71	8.30	23.62	8.54	0.74	0.63	UNS-2A	0.66	F10	4.02	M10x20	66.30	863
DN150		mm	111.10	346.0	146.0	157.0	226.0	286.0	916.0	266.0	28.45	23.75	1½"-12	26.20	F12	125.0	M12x20	63.00	872
6"		inch	4.37	13.62	5.75	6.18	8.90	11.26	36.06	10.47	1.12	0.94	UNF-2A	1.03	F12	4.92	M12x20	138.90	1012



## Floating Ball 3 Piece

### Components & Materials



Item	Description	Material specification	Qty.
1	Body	Acc. Ordering Code	1
2	Ends	Acc. Ordering Code	2
3	Ball	Acc. Ordering Code	1
4	Stem	Acc. Ordering Code	1
5*	Seat	Acc. Ordering Code	2
6*	Inner Seal	PTFE	2
6A*	Outer Seal	Acc. Ordering Code	2
6B	Support Ring	S. Steel	1
7*	Stem Thrust Seal	VIRGIN PEEK, PCTFE (KEL-F)	1
7A*	Anti-Abrasion Ring	VIRGIN PEEK, PCTFE (KEL-F)	1
8	Stop Pin	S. Steel	1
9*	Stem Seal	CF PTFE, TFM	1
10	Follower	S. Steel	1
10A*	Slide Bearing	S. Steel	1

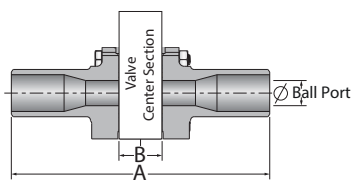
Item	Description	Material specification	Qty.
11	Disc Spring	S. Steel	2
12	Stem Nut	S. Steel	1
13	Tab Lock Washer	S. Steel	1
14	Handle	C. Steel	1
14A	Stop Plate	S. Steel	1
14B	Wrench Head	S. Steel	1
16	Wrench Bolt	S. Steel	1
17	Sleeve	PVC	1
18	Body Bolts	S. Steel	16-24
20	Anti-Static Spring	S. Steel	2
21	Anti-Static Plunger	S. Steel	2
23	Tag (not shown)	S. Steel	1

\* Maintenance kit components

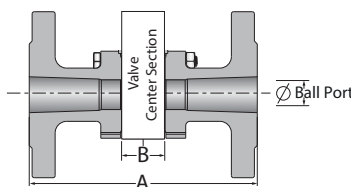
## Face To Face Sizes

Valve Size	Unit	B		A-XBW / ETI / ETD		A-ETO	A-TC	A-Flange Class 150+300		A-Flange Class 600		A-Flanged DIN PN16-PN100	
		Std. port	Full port	Std. port	Full port	Std. port	Std. port	Std. port	Full port	Std. port	Full port	Std. port	Full port
DN8	mm	20.6	----	140.6	----	104.6	----	----	----	----	----	----	----
¼"	inch	0.8	----	5.54	----	4.12	----	----	----	----	----	----	----
DN10	mm	20.6	----	140.6	----	137.0	----	----	----	----	----	130.0	----
⅜"	inch	0.8	----	5.54	----	5.39	----	----	----	----	----	5.12	----
DN15	mm	20.6	24.5	140.6	146.9	137.0	89.0	140.0	139.9	165.0	152.0	130.0	130.0
½"	inch	0.8	1.0	5.54	5.78	5.39	3.5	5.51	5.51	6.5	6.0	5.12	5.11
DN20	mm	24.5	31.7	146.9	168.7	146.9	101.5	152	152.3	151.9	165.1	150.0	150.0
¾"	inch	1.0	1.25	5.8	6.64	5.78	4.0	6.0	6.0	5.98	6.5	5.9	5.91
DN25	mm	31.7	41.3	168.7	179.3	164.0	114.3	165.0	164.9	215.9	178.0	160.0	160.0
1"	inch	1.25	1.63	6.64	7.06	6.46	4.5	6.49	6.49	8.5	7.01	6.3	6.3
DN32	mm	41.3	48.4	179.3	189.4	179.3	----	178.0	178.0	178.0	178.0	180.1	180.0
1¼"	inch	1.6	1.9	7.06	7.46	7.06	----	7.0	7.0	7.0	7.0	7.1	7.1
DN40	mm	48.4	56.3	189.4	200.3	184.0	140.0	190.0	190.5	241.4	216.1	200.0	200.0
1½"	inch	1.91	2.22	7.46	7.9	7.24	5.5	7.5	7.5	9.5	8.51	7.9	7.9
DN50	mm	56.3	72.6	200.3	232.6	193.5	159.0	216.0	216	292.1	241.0	229.9	230.0
2"	inch	2.22	2.86	7.89	9.16	7.62	6.3	8.5	8.5	11.5	9.5	9.05	9.06
DN65	mm	72.6	83.3	232.6	283.3	232.6	213.0	241.0	241.0	241.0	330.0	230.0	270.0
2½"	inch	2.9	3.28	9.16	11.15	9.16	8.4	9.5	11.1	9.5	13.0	9.06	10.63
DN80	mm	83.3	108.8	283.3	349.0	283.3	215.8	282.0	282.2	356.0	356.0	279.9	310.0
3"	inch	3.28	4.28	11.15	13.7	11.15	8.5	11.1	11.1	14.0	14.0	11.0	12.2
DN100	mm	109.0	123.0	349.0	390.0	349.0	245.4	305.0	305	432.0	432.0	350.0	350.0
4"	inch	4.28	4.84	13.7	15.4	13.7	9.7	12.0	12.0	17.0	17.0	13.8	13.8
DN150	mm	146.0	----	444.0	420.0	444.0	146.1	403.1	403.1	559.0	559.0	350.0	480.0
6"	inch	5.75	----	17.5	16.5	17.5	5.8	15.9	15.9	22.0	22.0	13.8	18.9

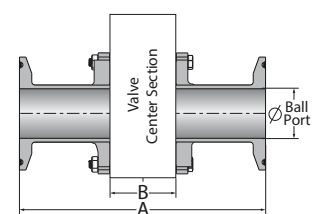
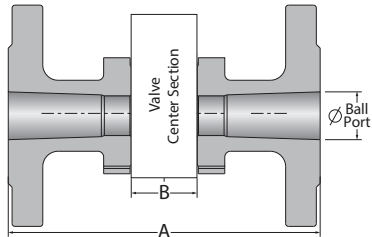
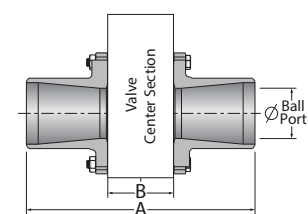
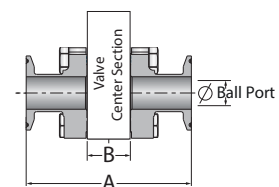
XBW / ETO / ETI / ETD



Flanged



TC





## ASME BPE Floating Ball 3 Piece

### Valve Dimensions - DIN 11850 sizes

DIN 11850 sizes	Unit	Full port	OD	ID	A ETD	A TCD	B	C	D	H	K	S	W	R TCD	M	N	P	F1	F2	TxL	Weight kg/lb	Kv Cv
DN10	mm	11.15	13.0	10.0	100.0	90.0	20.60	29.0	11.15	46.30	41.50	115.0	69.0	34.0	5.54	3/8" UNF	7.20	-	32.0	M5X6	1.00	9
3/8"	Inch	0.44	0.51	0.39	3.94	3.54	0.81	1.14	0.44	1.82	11.63	4.53	2.72	1.34	0.22	3/8" UNF	0.28	-	1.26	M5X6	2.20	10
DN15	mm	14.3	19.0	16.0	110.0	95.0	24.60	36.0	14.3	49.40	44.0	115.0	69.0	34.0	5.54	3/8" UNF	7.20	15.0	34.0	M5X6	1.30	30
1/2"	Inch	0.56	0.75	0.63	4.33	3.74	0.97	1.42	0.56	1.94	1.73	4.53	2.72	1.34	0.22	3/8" UNF	0.28	0.59	1.34	M5X6	2.85	35
DN20	mm	20.6	23.0	20.0	120.0	110.0	31.70	36.0	20.6	61.0	44.0	146.0	79.0	34.0	5.54	3/8" UNF	7.20	20.0	36.0	M5X8	2.20	48
3/4"	Inch	0.81	0.91	0.79	4.72	4.33	1.25	1.42	0.81	2.40	1.73	5.75	3.11	1.34	0.22	3/8" UNF	0.28	0.79	1.42	M5X8	4.85	56
DN25	mm	25.4	29.0	26.0	180.0	130.0	41.30	43.50	25.4	85.0	44.0	187.0	94.0	50.50	7.54	7/16" UNF	7.20	29.70	29.70	M5X8	2.80	97
1"	Inch	1.0	1.14	1.02	7.09	5.12	1.63	1.71	1.0	3.35	1.73	7.36	3.70	1.99	0.30	7/16" UNF	0.28	1.17	1.17	M5X8	6.20	114
DN32	mm	31.8	35.0	32.0	190.0	140.0	48.40	55.50	31.8	99.0	46.0	237.0	99.0	50.50	7.54	7/16" UNF	8.0	35.35	35.35	M6X10	4.40	145
1 1/4"	Inch	1.25	1.38	1.26	7.48	5.51	1.91	2.19	1.25	3.90	1.73	9.33	3.90	1.99	0.30	7/16" UNF	0.31	1.39	1.39	M6X10	9.70	170
DN40	mm	38.1	41.0	38.0	200.0	150.0	56.30	48.25	38.1	103.0	46.0	237.0	109.0	50.50	8.71	9/16" UNF	8.0	35.35	35.35	M6X10	8.00	168
1 1/2"	Inch	1.50	1.61	1.50	7.87	5.91	2.22	1.90	1.50	4.06	1.73	9.33	4.29	1.99	0.34	9/16" UNF	0.31	1.39	1.39	M6X10	17.60	196

DIN 11850 sizes	Unit	Full port	OD	ID	A ETD	A TCD	B	C	D	H	K	S	W	R TCD	M	M-DD	N	P	F1	F2	TxL	Weight kg/lb	Kv Cv
DN50	mm	50.8	53.0	50.0	100.0	90.0	72.70	70.0	50.8	129.30	45.0	401.0	139.0	64.0	-	13.90	M20X2.5	14.60	70.0	49.50	M8X12	12.0	385
2"	inch	2.0	2.09	1.97	3.94	3.54	2.86	2.76	2.0	5.09	1.77	15.79	5.47	2.52	-	0.57	M20X2.5	0.57	2.76	1.95	M8X12	25.0	450
DN65	mm	63.5	70.0	66.0	110.0	95.0	83.40	98.30	63.5	169.20	57.20	401.0	164.0	91.0	18.90	15.90	1"-14	16.70	102.0	100.0	M10X20	19.0	581
2 1/2"	Inch	2.50	2.76	2.60	4.33	3.74	3.28	3.87	2.50	6.66	2.25	15.79	6.46	3.58	0.74	0.63	UNS-2A	0.66	4.02	3.94	M10X20	41.0	680
DN80	mm	82.6	85.0	81.0	120.0	110.0	112.0	105.50	82.6	184.50	70.0	401.0	199.0	106.0	18.90	15.90	1"-14	16.70	102.0	120.0	M10X20	30.0	1060
3"	inch	3.25	3.35	3.19	4.72	4.33	4.41	4.15	3.25	7.26	2.75	15.79	7.83	4.17	0.74	0.63	UNS-2A	0.66	4.02	4.72	M10X20	66.0	1240
DN100	mm	100.0	104.0	100.0	180.0	130.0	123.0	179.0	100.0	193.50	61.0	401.0	224.0	119.0	18.90	15.90	1"-14	16.70	102.0	140.0	M10X20	40.0	1402
4"	inch	3.94	4.09	3.94	7.09	5.12	4.84	7.05	3.94	7.62	2.40	15.79	8.82	4.69	0.74	0.63	UNS-2A	0.66	4.02	5.51	M10X20	88.0	1640

## ASME BPE Floating Ball 3 Piece

## Valve Dimensions - ISO 1127 sizes

ISO 1127 sizes	Unit	Full port	OD	ID	A ETD	A TCD	B	C	D	H	K	S	W	RTCD	M	N	P	F	TxL	Weight kg/lb	Kv Cv	
DN10	mm	11.15	17.20	14.0	147.0	89.0	24.60	35.30	11.15	67.90	47.0	150.0	54.0	25.0	5.54	3/8" UNF	6.50	F03	36.0	M5X6	1.00	9
3/8"	Inch	0.44	0.68	0.55	5.79	3.50	0.97	1.39	0.44	2.67	1.85	5.91	2.13	0.98	0.22		0.26		1.42		2.20	10
DN15	mm	14.3	21.30	18.10	164.0	118.0	31.70	38.20	14.3	86.0	49.0	187.0	61.0	50.50	7.50	7/8" UNF	5.50	F04	42.0	M5X10	1.75	30
1/2"	Inch	0.56	0.84	0.71	6.46	4.65	1.25	1.50	0.56	3.39	1.93	7.36	2.40	1.99	0.30		0.22		1.65		3.85	35
DN20	mm	20.6	26.90	23.70	168.0	118.0	35.50	43.50	20.6	89.0	49.0	187.0	61.0	50.50	7.50	7/8" UNF	7.20	F04	42.0	M5X10	2.00	48
3/4"	Inch	0.81	1.06	0.90	6.61	4.65	1.40	1.71	0.81	3.50	1.93	7.36	2.40	1.99	0.30		0.28		1.65		4.40	56
DN25	mm	25.4	33.70	29.70	186.0	141.0	50.0	51.50	25.4	105.0	49.0	236.0	80.0	50.50	8.67	1" UNF	8.0	F05	50.0	M6X12	4.00	98
1"	Inch	1.0	1.33	1.17	7.32	5.55	1.97	2.03	1.0	4.13	1.93	9.29	3.15	1.99	0.34		0.31		1.97		8.80	114
DN32	mm	31.8	42.40	38.40	200.0	-	56.30	48.20	31.8	100.0	49.0	236.0	91.0	64.0	8.67	1 1/4" UNF	8.0	F05	50.0	M6X12	5.00	145
1 1/4"	Inch	1.25	1.67	1.51	7.87	-	2.22	1.90	1.25	3.94	1.93	9.29	3.58	2.52	0.34		0.31		1.97		11.00	170

ISO 1127 sizes	Unit	Full port	OD	ID	A ETD	A TCD	B	C	D	H	K	S	W	RTCD	M	M-DD	Q	N	P	F	TxL	Weight kg/lb	Kv Cv	
DN40	mm	38.1	48.30	44.30	223.0	184.0	72.70	70.0	38.1	143.10	45.0	401.0	108.0	64.0	-	13.90	20.0	M20	14.0	F07	70.0	M8X10	9.50	168
1 1/2"	inch	1.50	1.90	1.74	8.78	7.24	2.86	2.76	1.50	5.63	1.77	15.79	4.25	2.52	-	0.55	0.79		0.55		2.76		20.90	196
DN50	mm	50.8	60.30	56.30	250.40	169.10	83.35	98.30	50.8	185.10	57.20	401.0	139.70	77.50	18.90	15.90	22.70	1"-14	16.70	F10	102.0	M10X12	14.00	385
2"	inch	2.0	2.37	2.22	9.86	6.66	3.28	3.87	2.0	7.29	2.25	15.79	5.50	3.05	0.74	0.63	0.89	UNF-2A	0.66		4.02		30.80	450
DN65	mm	63.5	76.10	72.10	302.0	193.0	96.40	105.50	63.5	192.40	70.0	401.0	160.0	91.0	18.90	15.90	22.70	1"-14	16.70	F10	102.0	M10X12	17.70	581
2 1/2"	Inch	2.50	3.0	2.84	11.89	7.60	3.80	4.15	2.50	7.57	2.76	1.58	6.30	3.58	0.74	0.63	0.89	UNF-2A	0.66		4.02		38.94	680
DN80	mm	82.6	88.90	84.30	349.0	236.0	108.80	114.10	82.6	200.0	80.0	600.0	177.0	106.0	18.90	15.90	22.70	1"-14	16.70	F10	102.0	M10X12	26.00	106
3"	Inch	3.25	3.50	3.32	13.74	9.29	4.28	4.49	3.25	7.87	3.15	23.62	6.97	4.17	0.74	0.63	0.89	UNF-2A	0.66		4.02		57.20	1240

Standard	Sizes	Wall thickness (mm)	End Connection (19-22)	End Connection Length
ISO 1127	3/8"-3/4"	1.6	BW1.6	Short
			ET1.6	Extended
	1"-2 1/2"	2.0	BW2.0	Short
			ET2.0	Extended
	Over 2 1/2"	2.3	BW2.3	Short
			ET2.3	Extended



## Floating Ball 3 Piece - Ordering Code System

"Mandatory option" options are marked with **green background** | "Standard offer" options are marked with **light green background**

1	2	3	4	5	6	7	8	9	10	11	12	13	14	15	16	17	18	19	20	21	22	23	24	25	26	27	28	29	30	
6	0				F	4	7	W	-	6	6	6	6	A	T	G	/	B	W											
Size		Features				Series		Design		Body material		Ends material		Ball/Stem material		Seat material	Inner Seal material	Outer Seal material	End connection				Special features							

Size (1-2)		
Code	inch	mm
02	¼"	8
03	⅜"	10
05	½"	15
07	¾"	20
10	1"	25
12	1¼"	32
15	1½"	40
20	2"	50
25	2½"	65
30	3"	80
40	4"	100
60	6"	150

Features (3-6)	
F	Fire safe
B	Full port
Q	Cavity filler seats
I	High purity Class 10000

Series (7-8)	
47	Floating ball 3 piece

Design (9)	
W	Total HermetiX Integrity package
G	Total HermetiX Integrity package - FDA compliant

Body material (11)	
6	S. SteelCF8M/CF3M
4	C. steel
W	Hastelloy-C22
S	254SMO
D	Duplex
9	Low Temp C. steel
1	Bronze
K	Super Duplex
7	Monel
A	Alloy-20
C	Hastelloy-C276

Ends material (12)	
6	S. SteelCF8M/CF3M
4	C. steel
W	Hastelloy-C22
S	254SMO
D	Duplex
1	Bronze
K	Super Duplex
7	Monel
A	Alloy-20
C	Hastelloy-C276

Ball material (13)	
6	S. SteelCF8M/CF3M
W	Hastelloy-C22
S	254SMO
D	Duplex
1	Bronze
K	Super Duplex
7	Monel
A	Alloy-20
C	Hastelloy-C276

Stem material (14)	
6	S. Steel316L
M	High Strength S. Steel
Z	Inconel 718
W	Alloy-C22
S	254SMO A479
A	Alloy-20
D	Duplex A479
K	Super Duplex A479
7	Monel
C	Hastelloy-C276

Seat material (15)	
A	TFM
P	CF PTFE
K	CF PEEK
L	Virgin Peek
U	UHMWPE
C	PCTFE
Y	Delrin
W	PVDF
T	PTFE

Inner Seal Material (16)	
T	PTFE
G	Expanded graphite
U	UHMWPE
V	Viton
B	NBR

Outer Seal Material (17)	
G	Expanded graphite
A	TFM
U	UHMWPE

End Connection (19-22)	
Welded	
BW10	Buttweld schd. 10
BW	Buttweld schd. 40
SW	Socket weld
XBW10	Extended buttweld schd. 10
XBW	Extended buttweld schd. 40
XSW	Extended socket weld
BW5	Buttweld schd. 5
BW80	Buttweld schd. 80
BWO*	Buttweld tube OD
BWD	Buttweld DIN 11850
BW1.6	Buttweld ISO 1127 1.6mm
BW12.0	Buttweld ISO 1127 2.0mm
BW12.3	Buttweld ISO 1127 2.3mm
SWO*	Socket weld tube OD
ETO*	Extended tube OD
ET11.6	Extended buttweld ISO 1127 1.6mm
ET12.0	Extended buttweld ISO 1127 2.0mm
ET12.3	Extended buttweld ISO 1127 2.3mm
ETD	Extended buttweld DIN 11850

Threaded	
NPT	ASME B1.20.1 - National Pipe Taper thread
BSPT	EN 10226 - Pipe Taper thread
BSPP	ISO228-1, DIN3852 - Pipe Parallel thread
DIN3852	DIN3852 - Pipe Parallel thread
AS5202	SAE internal straight thread
MNPT	Male NPT
MBSPT	Male BSPT

Flanged	
150	ASME B16.5 #150 RF
300	ASME B16.5 #300 RF
600	ASME B16.5 #600 RF
900	ASME B16.5 #900 RF
PN 16	EN1092 PN16 RF
PN40	EN1092 PN40 RF
PN63	EN1092 PN63 RF
PN 100	EN1092 PN100 RF
PN 160	EN1092 PN160 RF

Clamp	
LL*	Compression fitting (Imperial) - <b>No</b> Nuts & Ferrules
LM*	Compression fitting (metric) - <b>No</b> Nuts & Ferrules
LL-NF*	Compression fitting (Imperial) - <b>with</b> Nuts & Ferrules
LM-NF*	Compression fitting (metric) - <b>with</b> Nuts & Ferrules
TC*	Tri-Clamp
GR**	Grayloc© compatible hub (Grayloc© is a registered trademark of Grayloc Products, L.L.C.)

\* Std. port Only

\*\* Not available for 1¼" (DN32) Valves